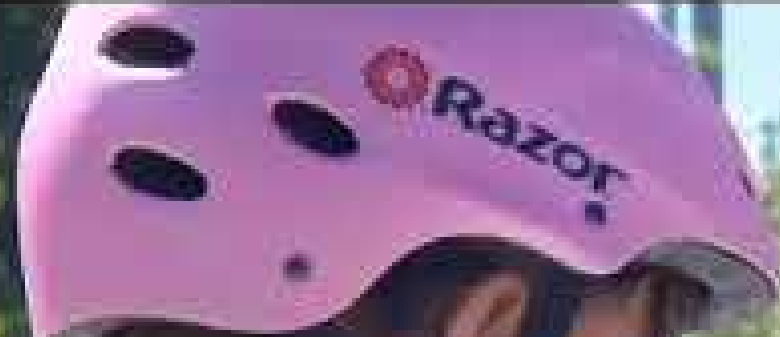




**LOCAL  
MOTION**

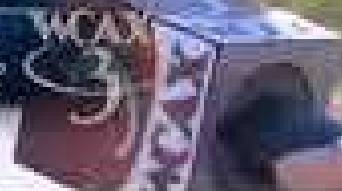
**BIKING & WALKING FOR A BETTER VT**

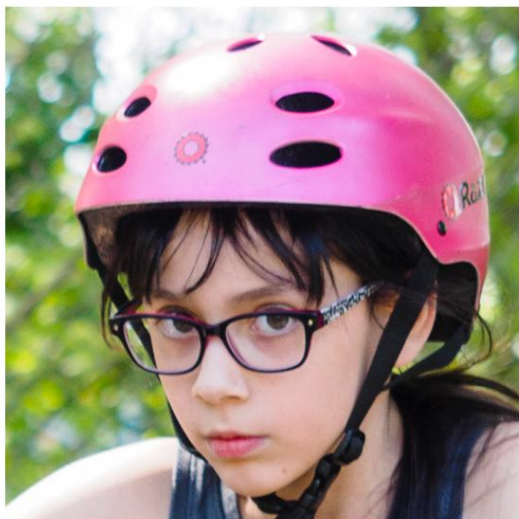


Victoria Goodsell

THIRD GRADER

6:18 56"







**COUNTIES:**



**TOWNS:**



**SCHOOLS:**



**KIDS:**

**HOURS:**



**14**

**60**

**73**



**31,579**

**148,713**





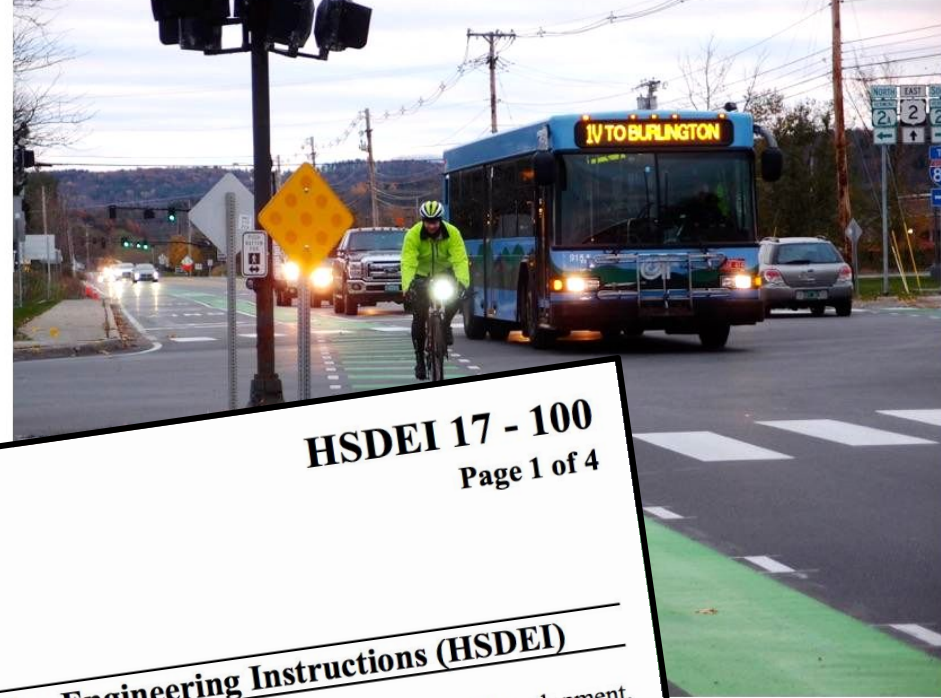
"We enjoyed our ride so much and loved the information and enthusiasm of all the folks on the ferry. We have ridden in many countries and LOVED riding in Vermont. Thanks so much!"

April Green & John Long, Mill Valley, CA

	2014	2015	2016	2017 (Estimate)
Net operating income (loss)	\$ (66,008)	\$ (66,838)	\$ (29,302)	\$ (610)







HSDEI 17 - 100  
Page 1 of 4



**Highway Safety & Design Engineering Instructions (HSDEI)**

**Distribution:** Highway Division, Director of Policy, Planning and Intermodal Development,  
American Council of Engineering Companies of Vermont

**Approved:** e-Signed by Jesse Devlin  
on 2017-05-11 18:09:21 GMT  
Jesse A Devlin, P.E.,  
Highway Safety & Design Program Manager

**Date:** May 11, 2017

**Subject:** Bicycle Facility Design Guidance



# KINGDOM ROADS



**Safer Walking and Biking in  
Craftsbury, Greensboro,  
Hardwick, and Barton Village**

